

PALMER STATION MONTHLY SCIENCE REPORT

February 2022



Pier Construction in February 2022. *Image Credit: Marissa Goerke*

NEWS FROM THE LAB

Jamee Johnson, Peninsula Lab Manager

Pier construction continued throughout February 2022. The first three sets of pilings have been installed, and planks are beginning to be installed. The pier is beginning to look like it's taking shape. The barge has been moved back so that the final set of pilings can be installed in the next few weeks. Progress has been good, and the pier schedule seems to be on track to complete by the end of the summer season.

There is a new Palmer Station Webcam so that our Palmer community can watch as our new pier is constructed <https://www.usap.gov/videoclipsandmaps/palwebcam.cfm>

The Research Associate will remain on station continuing supporting the science that occurs in and around Terra Lab. The Lab Manager email will remain active, but if you have any questions regarding science at Palmer Station, please reach out to the Peninsula Science & Technical Projects Manager, Jamee Johnson at Jamee.Johnson.contractor@usap.gov. A Lab Manager and Instrument Technician are scheduled to return for the winter 2022 season.

C-013-P: PALMER, ANTARCTICA LONG TERM ECOLOGICAL RESEARCH (LTER): LAND-SHELF-OCEAN CONNECTIVITY, ECOSYSTEM RESILIENCE, AND TRANSFORMATION IN A SEA-ICE INFLUENCED PELAGIC ECOSYSTEM – APEX PREDATOR COMPONENT

Dr. Megan A. Cimino, Principal Investigator, University of California, Santa Cruz

Field team leaders Megan and Darren Roberts installed game cameras for the Cimino C-013-P project just before winter 2021. They have been operating throughout the winter, and lab staff visited to change batteries and check operations on the cameras.

C-024-P: PALMER, ANTARCTICA LONG-TERM ECOLOGICAL RESEARCH (LTER): LAND-SHELF-OCEAN CONNECTIVITY, ECOSYSTEM RESILIENCE, AND TRANSFORMATION IN A SEA-ICE INFLUENCED PELAGIC ECOSYSTEM – WHALE COMPONENT

Dr. Ari Friedlaender, Principal Investigator, University of California, Santa Cruz, Santa Cruz, CA

R/V Laurence M Gould marine technicians deployed two passive acoustic moorings in the Palmer Station vicinity to monitor acoustic conditions in the area. The scientists and crew recovered the moorings during the LTER cruise. The mooring at Station E was redeployed. The second mooring was flooded and not redeployed.



Palmer RA Marissa Goerke mapped the glacier terminus in February, 2022. The photos above show new land exposed - January 2020 (left) compared with February 2022 (right)
Image Credit: Marissa Goerke



February 16 – New islands beginning to appear in Arthur Harbor. *Image Credit: Marissa Goerke*

**PALMER STATION
RESEARCH ASSOCIATE MONTHLY REPORT
February 2022
Marissa Goerke**

A-111-P: THE NEXT GENERATION OF GEOSPACE RESEARCH FACILITIES AT PALMER STATION

Andrew Gerrard, Principal Investigator, New Jersey Institute of Technology

Extremely Low Frequency/Very Low Frequency (ELF/VLF) radio wave observations at Palmer Station are used to provide a deeper understanding of lightning and its effects on the Earth's inner radiation belt. Lightning source currents are estimated or directly measured by experimental observations of individual natural and rocket-triggered lightning flashes in North America. Together, the North American and Antarctic data sets are used to experimentally identify and analyze the components of lightning and the effects of lightning, such as lightning-induced electron precipitation (LEP), that are observed in the Antarctic, more than 10,000 km away.

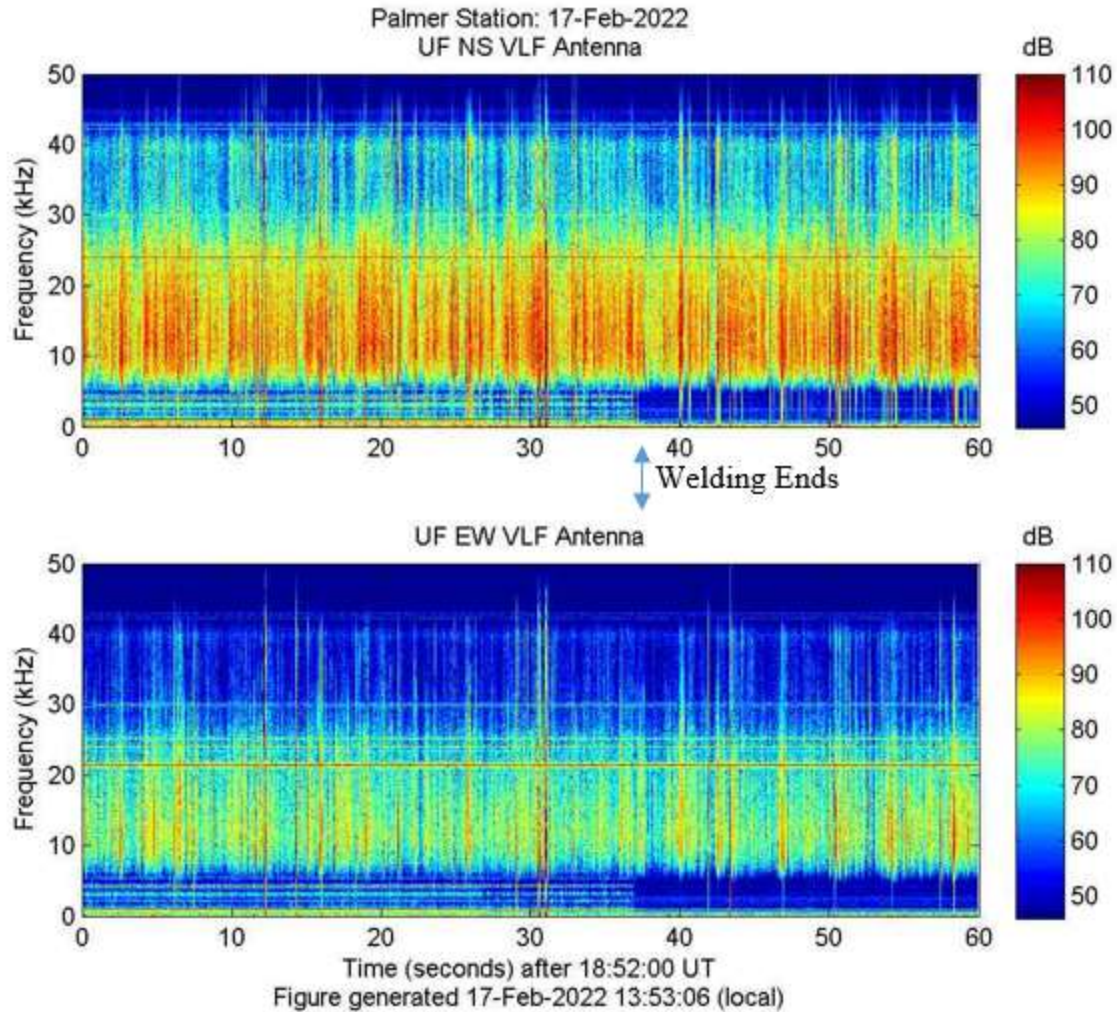


Figure 1- Real-Time broadband VLF Spectrogram from Palmer Station, Antarctica depicting the difference in noise levels when welding is occurring on the pier project.

Both the Extremely Low Frequency and Very Low Frequency systems operated well this month. The spectrograms were reviewed daily and bi-weekly antennas inspections were done as weather allowed. Pier project welding was noted in the VLF data and confirmed by the Research Associate (Figure 1).

Current VLF/ELF data from Palmer Station can be observed at:
http://halo.ece.ufl.edu/realtime_palmer_nb.php and
http://halo.ece.ufl.edu/realtime_palmer_bb.php.

A-111-P: SAMBA MAGNETOMETER

Andrew Gerrard, Principal Investigator, New Jersey Institute of Technology

The three-axis fluxgate magnetometer at Palmer is one in a chain of eleven longitudinal, ground-based magnetometers extending down through South America and into Antarctica. The primary scientific goals are the study of Ultra Low Frequency (ULF) waves and the remote sensing of

mass density in the inner magnetosphere during geomagnetically active periods. Palmer's magnetometer is also a conjugate to the Canadian Poste de la Baleine Station, allowing the study of conjugate differences in geomagnetic substorms and general auroral activity.

SAMBA stands for South American Meridional B-field Array. The sites are approximately along the 0° geomagnetic longitude and ranging from -5° to -48° geomagnetic latitude. In combination with other magnetometer chains, including the AGO (Automated Geophysical Observatory) systems elsewhere in Antarctica, the stations create an almost complete, cusp-to-cusp-long meridional chain at approximately 0° magnetic meridian.

The magnetometer was originally installed at Palmer in 2005, and a replacement installed in April of 2008. In 2017 the project was taken over by Andrew Gerrard. On February 27th, 2017 the USAP IT blocked all northbound VPN traffic under a larger umbrella of blocking all northbound encrypted-tunnel traffic. Since that time there has been much discussion, but the magnetometer is still considered a security vulnerability. The Research Associate has been working with the home institution at the University of California, Los Angeles to resolve this issue. As of September 30th, 2020 at 7:45am local time, the magnetometer was removed from the network. The instrumentation and computer are still operational. Data will continue to be collected and stored locally. The RA is working with the IT department to send out the data to UCLA when requested. More information can be found at:

<http://magnetometers.bc.edu/index.php/palmer>.

B-005-P: COASTAL OCEAN DYNAMICS APPLICATIONS RADAR (CODAR)

Josh Kohut, Principal Investigator, Rutgers University Department of Marine

Coastal Ocean Dynamics Applications RADAR (CODAR) was developed between 1973 and 1983 by NOAA's Wave Propagation Laboratory. It is a high frequency radar that operates at 12 MHz so can receive signals from over the horizon. There are CODAR antennas at Palmer (just below Terra Lab near Hero Inlet) and also at the Joubins and the Wauwerman Islands. Each system measures the radial component of ocean wave velocity by transmitting a fundamental frequency at 12 MHz and receiving a reflected signal at twice the fundamental frequency (half the wavelength). By combining the measured velocity components from the three stations, the total wave velocity can be determined. The Doppler shifts of the reflected signals can be used to measure surface currents. Wave velocity can be affected by currents at depths of 1 meter and shallower and thus a measureable with CODAR.

Two of the three site transmitters and receivers were shipped north on LMG21-11. The system is still continuously collecting data from the remaining site. The PI has deemed the data useful information from the single site.

The data will be available in the future at: <https://marine.rutgers.edu/~codaradm/>.

G-090-P: GLOBAL SEISMOGRAPH NETWORK (GSN) SITE AT PALMER STATION.

Kent Anderson, Principal Investigator, Incorporated Research Institutions for Seismology (IRIS)

Palmer's seismic station, code named PMSA, is part of the Global Seismic Network (GSN), a collection of 150+ sites worldwide, operating under the aegis of the Incorporated Research Institutions for Seismology (IRIS), and managed by the United States Geological Survey's

Albuquerque Seismological Laboratory (ASL). The site was installed in March 1993. As of August 2006, PMSA is also used as an ancillary seismic system for the CTBT/IMS installation; CTBT-specific protocols for the seismic system are covered in the CTBT (T-998) section this document.

A standard seismic station consists of three seismometers oriented to detect ground motion along three mutually perpendicular lines. Most of the time the directions chosen are north-south, east-west, and up-down. The seismometers in the Palmer Station installation are “forced balanced” instruments, which means that they work by keeping an inertial mass stationary with respect to the instrument (and the earth). When a seismic wave arrives, the ground moves, carrying along the housing of the seismometer. The inertial mass tends to remain stationary and not move with the instrument, but it is electronically “forced” to travel along with the instrument (and the earth). The amount of “force” necessary to make it move with the rest of the instrument is proportional to the ground acceleration and is recorded as the raw data from the seismometer.

By examining time of arrival, azimuth, magnitude, frequency and wave type of the incoming waves, seismologists can determine the location, depth of focus, magnitude, type of faulting that occurred, ground acceleration in gravitational force and the structure of the medium (the earth) through which the waves traveled to reach the station. The Research Associate operates and maintains on-site equipment for the project.

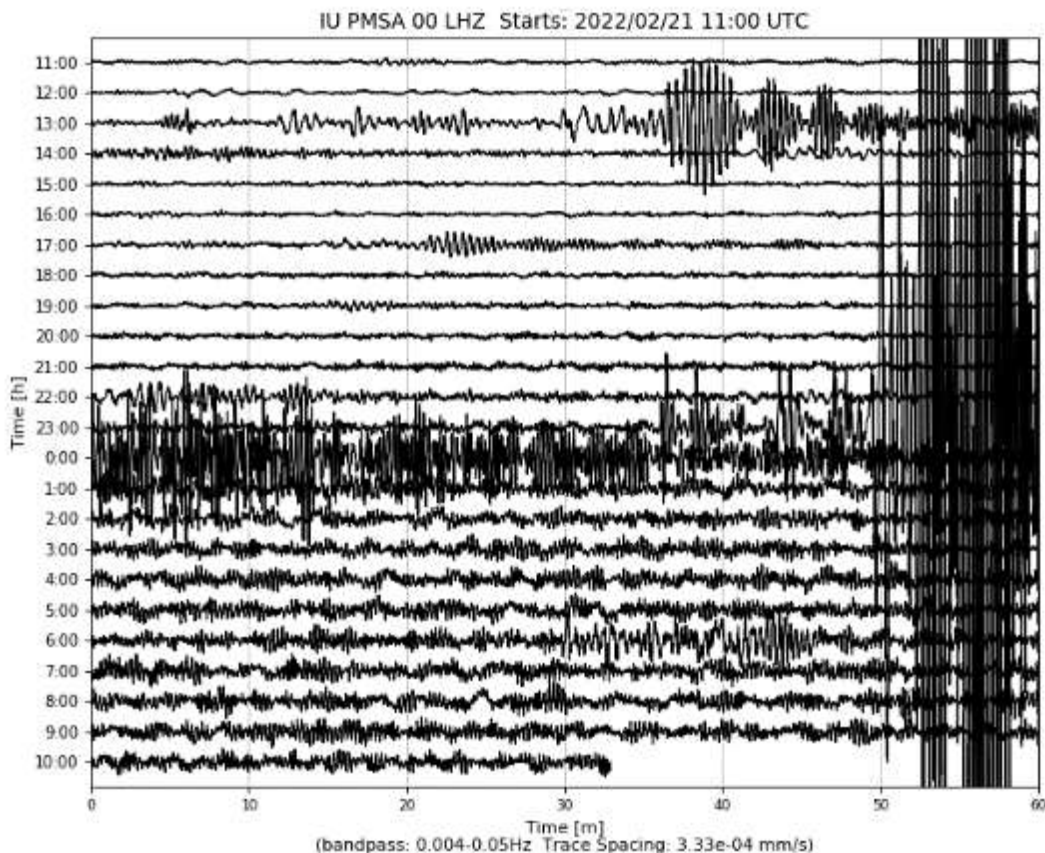


Figure 3- Balleny Islands 6.3 Magnitude Earthquake on February 21, 2022

The system operated consistently throughout the month. The time stamp and seismic activity found on the Heliplot was checked daily. The seismometer is not affected by the pile drilling for the pier project as shown above. Current data from Palmer station can be found on the USGS site: <https://earthquake.usgs.gov/monitoring/operations/stations/IU/PMSA/#heliplot>.

O-264-P: A STUDY OF ATMOSPHERIC OXYGEN VARIABILITY IN RELATION TO ANNUAL DECADAL VARIATIONS IN TERRESTRIAL AND MARINE ECOSYSTEMS.

Ralph Keeling, Principal Investigator, Scripps Institution of Oceanography

The goal of this project is to resolve seasonal and inter-annual variations in atmospheric O₂ (detected through changes in O₂/N₂ ratio), which can help to determine rates of marine biological productivity and ocean mixing as well as terrestrial and oceanic distribution of the global anthropogenic CO₂ sink. The program involves air sampling at a network of sites in both the Northern and Southern Hemispheres.

The Scripps Institution of Oceanography flask sampling project analyzes air samples to assess variations in the atmospheric oxygen content caused by exchanges of O₂ between the atmosphere and the Southern Ocean. The oceans tend to be a source of oxygen to the air in the spring and summer, and a sink for oxygen in the fall and winter. The spring emissions are mostly due to photosynthesis in the water, while the winter uptake is due to mixing process, which bring oxygen depleted waters from depth up to the surface. These exchanges lead to variations in the oxygen content of the air above the water, and these changes are rapidly mixed around the latitude band by zonal winds. Measurements of the seasonal variations in oxygen content at Palmer and other sites may be valuable for documenting changes in the biological productivity of the southern oceans over time.

The percentage changes in oxygen are very small. Relative to the 20.95% background, the summer-winter differences are only about 0.01%. Some special precautions are necessary so that the O₂ content of the samples isn't perturbed at this low level. Among these precautions are maintaining a constant pressure and temperature in the flasks during sampling. This dictates the installation of the sampling station indoors and the use of a pump module with a bypass valve for avoiding pressure buildup. The Research Associate collects samples fortnightly from Terra Lab.

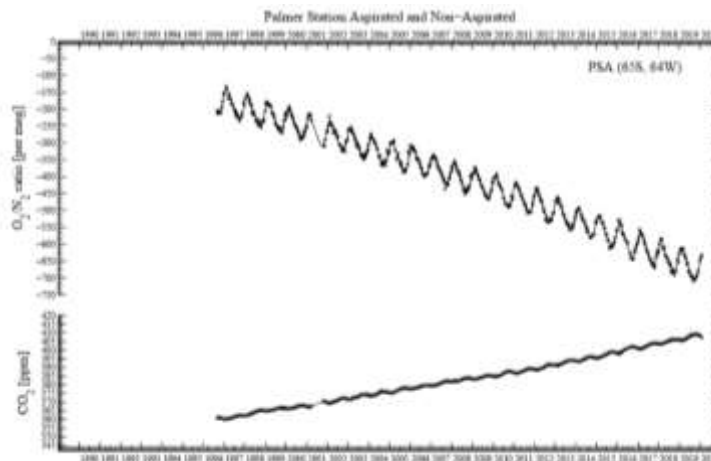


Figure 4- Historical plot of O₂/N₂ ratio per meg and CO₂ ppm updated on July 29, 2020

Air samples were collected on February 5 at 15:53 local time and February 17 at 08:20 local time. Wind conditions must equal or exceed 5 knots from a direction between 5° to 205° constantly for over an hour with no interference from human traffic on foot or in vessels. These air samples will be shipped to Scripps Institution of Oceanography in California for analysis. More information and data can be found at: <https://scripps2.ucsd.edu/osub2sub-data.html>.

O-264-P: COLLECTION OF ATMOSPHERIC AIR FOR THE NOAA/GMD WORLDWIDE FLASK SAMPLING NETWORK

Don Neff and Steve Montzka, Principal Investigators, National Oceanic and Atmospheric Administration / Global Monitoring Division; Boulder, CO

The NOAA ESRL Carbon Cycle Greenhouse Gases (CCGG) group makes ongoing discrete measurements to document the spatial and temporal distributions of carbon-cycle gases and provide essential constraints to our understanding of the global carbon cycle. The Halocarbons and other Atmospheric Trace Species (HATS) group quantifies the distributions and magnitudes of the sources and sinks for atmospheric nitrous oxide (N_2O) and halogen containing compounds. The Research Associate collects weekly air samples for the CCGG group and fortnightly samples for the HATS group. Wind must be between 5 and 15 knots and consistently blow from one sector with no people, equipment, or boats upwind of the sampling location.

Carbon Cycle Greenhouse Gases (CCGG) samples were collected on February 9 at 17:47 local time, February 14 at 11:17 local time, February 21 at 15:38 local time, and February 28 at 08:52 local time during favorable wind conditions. More information and data for the Carbon Cycle group can be found at: <https://www.esrl.noaa.gov/gmd/ccgg/trends/>.

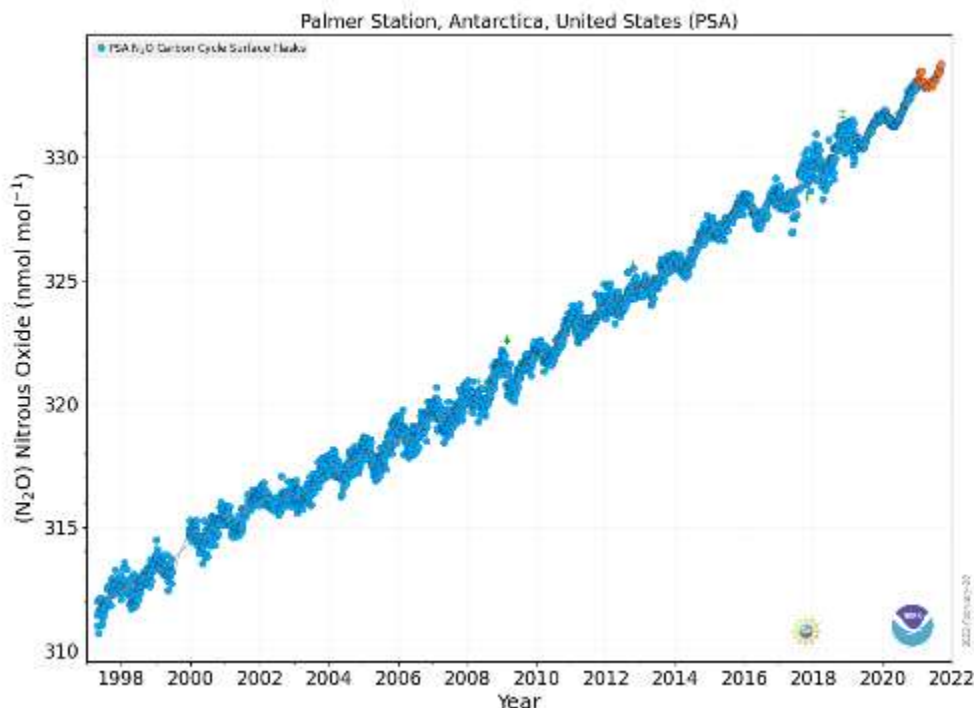


Figure 5- Nitrous Oxide (N_2O) Levels at Palmer Station dating back to 1994.

Orange dots are preliminary data.

The Halocarbons and other Atmospheric Trace Species (HATS) samples were collected on February 21 at 18:15 local time during favorable wind conditions. Samples were only collected once this month due to the LMG21-12 cruise delay. Please visit <https://www.esrl.noaa.gov/gmd/hats/> for more information about the Halocarbons and other Atmospheric Trace Species group.

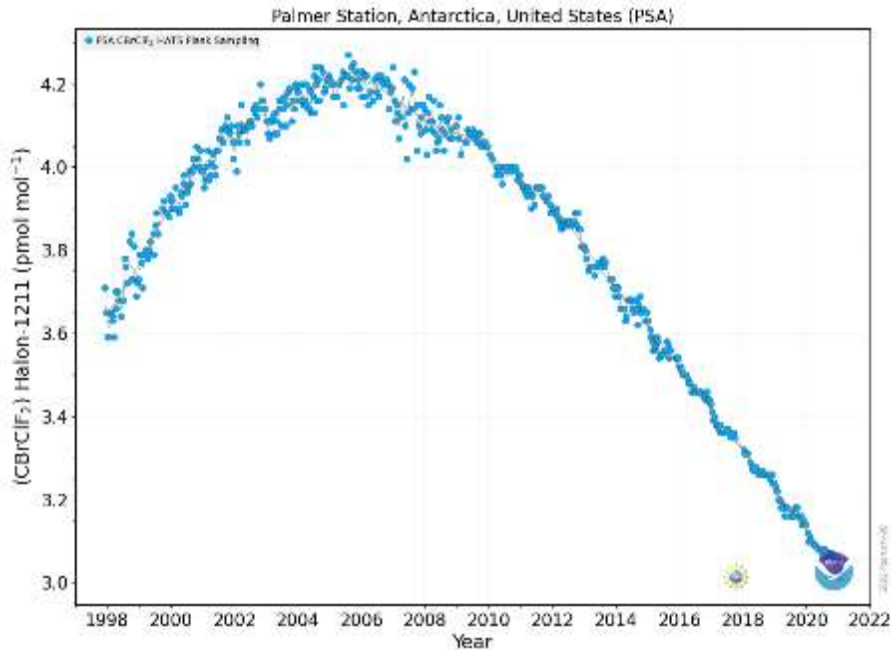


Figure 6- Halon 1211 (CBRCLF₂) Levels at Palmer Station dating back to 1998, one of the Halocarbon and Trace Gases measured at Palmer Station. Orange dots are preliminary data.

All samples collected on station are sent back to the Earth System Research Laboratories in Boulder, Colorado for analysis.

O-264-P: ULTRAVIOLET (UV) SPECTRAL IRRADIANCE MONITORING NETWORK

Scott Stierle, Principal Investigator, National Oceanic and Atmospheric Administration / Global Monitoring Division; Boulder, CO

A Biospherical Instruments (BSI) SUV-100 UV spectroradiometer produces full sky irradiance spectra ranging from the atmospheric UV cutoff near 290nm up to 605nm, four times per hour. A BSI Ground-based Ultraviolet (GUV-511) filter radiometer, an Eppley Precision Spectral Pyranometer (PSP), and an Eppley Total Ultra Violet Radiometer (TUV) also continuously measure hemispheric solar flux within various spectral ranges. The Research Associate operates and maintains on-site equipment for the project.

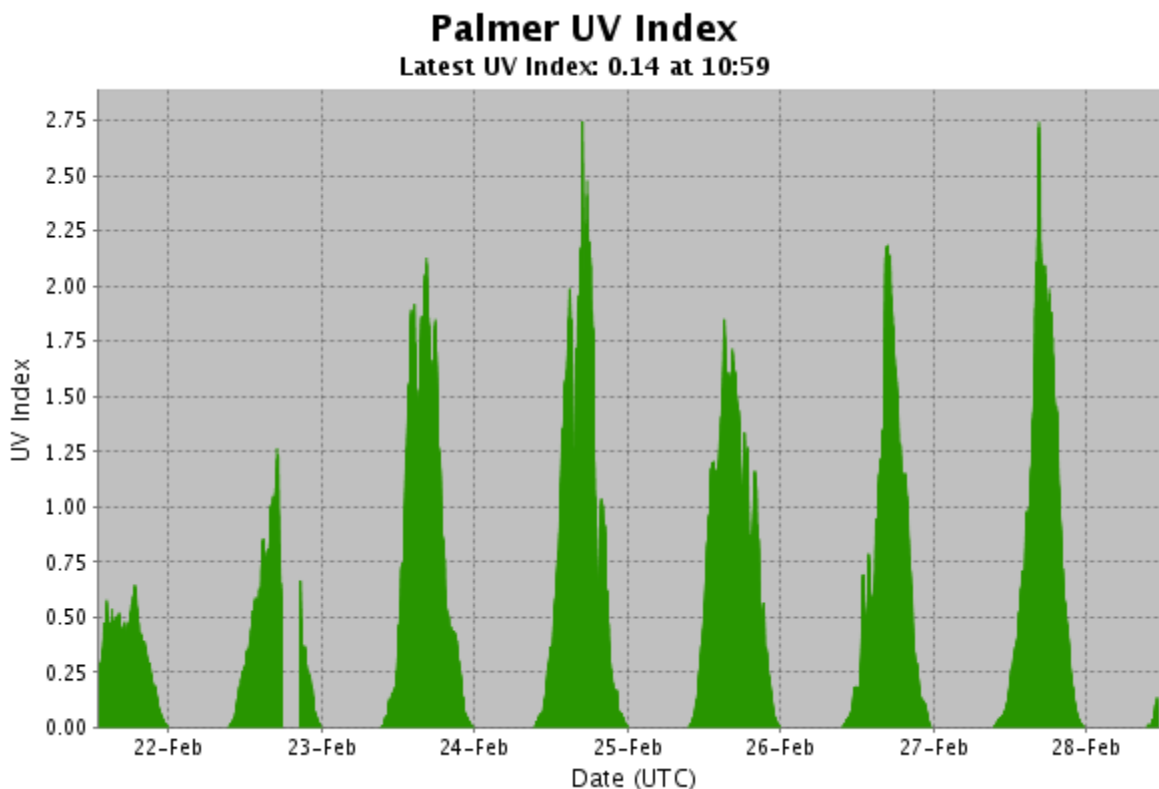


Figure 7- UV index generated from the GUV-511 radiometer in real time.

The log was filled out and collectors were cleaned on a daily basis. Once a week level checks were performed to confirm that the instrumentation was within +/- 0.2 degrees. The weekly log was sent out each Monday and a bi-weekly SUV-100 UV Absolute Scan was performed on February 12 and February 26 without issues. The TUVR was found to not be communicating on February 21 and its cable connector was found to be corroded beyond repair. The connector was replaced and communications from the instrument were restored on February 23.

For more information visit: <https://esrl.noaa.gov/gmd/grad/antuv/>.

R-938-P: TERASCAN SATELLITE IMAGING SYSTEM

Justin Maughmer, Principal Investigator, System Administrator, United States Antarctic Program

TeraScan is an integrated system of hardware and software designed for automated reception of data from meteorological/environmental satellites and for processing the data into images and data overlays. The system collects, processes, and archives DMSP and NOAA satellite telemetry, capturing approximately 25-30 passes per day. The data files for these images and overlays are of a special format called TeraScan Data Format (TDF). The Research Associate operates and maintains on-site equipment for the project. The TeraScan weather and ice imagery is used for both research and station operations.

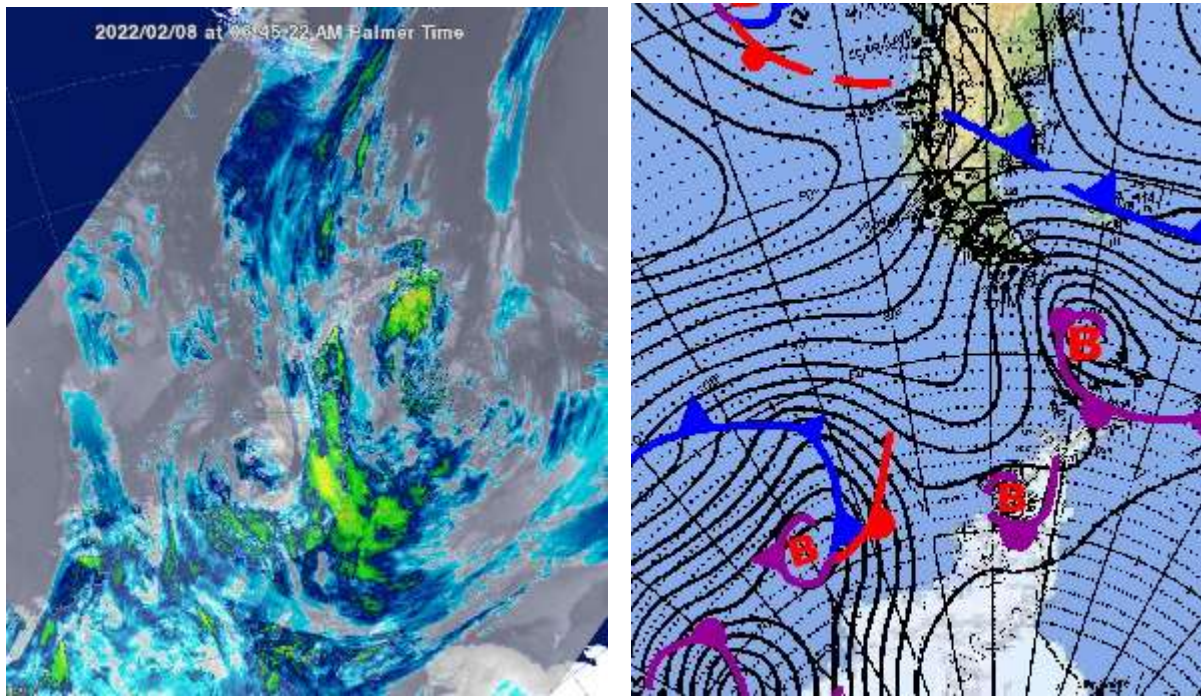


Figure 8- NOAA-19 Feb-08 satellite pass (left) explained by the Chilean Navy Meteorological Map (right)

The imagery was checked daily. Both the METOP and NOAA satellite passes were captured normally.

T-295-P: GPS CONTINUOUSLY OPERATING REFERENCE STATION.

Joe Pettit, Principal Investigator, UNAVCO

The National Science Foundation (NSF) tasked and funded the USGS Antarctic Program to establish a GPS (Global Positioning System) Continuous Operation Reference Station (CORS) at Palmer to serve a variety of scientific investigations in Antarctica. A permanent GPS CORS known as PALM (1003) was established during April and early May of 1997. Four reference marks were set and, along with 10 existing survey marks, PALM was tied in by differential GPS methods.

The GPS data collected supports the International GPS Service (IGS). This system is used for global geophysical studies such as crustal motion monitoring and determination of the global frame. PALM also provides Palmer scientists with real-time differential GPS positioning capabilities. Continuous 15-second epoch interval GPS data files are collected at station PALM, compressed, and transmitted to the NASA-JPL in Pasadena, CA.

JPL/NASA is contracted to maintain the system, and they have sub-contracted to UNAVCO. While operation and maintenance of the GPS/CORS base station is the responsibility of the Research Associate, it is available for grantees who wish to use the roving systems and/or differential post-processing using data from the fixed reference station. Users are expected to have proper training prior to deployment to Palmer. The Research Associate may offer support to visiting grantees at his/her discretion.

The system operated consistently throughout the month. The roving system was used to map the glacier terminus on February 16.



Figure 9- The 2022 terminus line overlaid on a Digital Globe image of Palmer Station from 2019.

The lights on the Trimble, Javad, and Ashtech Receivers were all illuminated in the correct pattern and showed no signs of interruption. More information can be found at the following website: https://www.unavco.org/projects/project-support/polar/base_stations_and_survey_systems/palmer/base.html.

T-998-P: INTERNATIONAL MONITORING STATION (IMS) FOR THE COMPREHENSIVE NUCLEAR TEST BAN TREATY ORGANIZATION. (CTBTO)
 Managed by General Dynamics

The Comprehensive Nuclear Test Ban Treaty (CTBT) bans all nuclear explosions. Although not ratified, the U.S.A. is following through with the treaty, including the installation monitoring stations around the world. The global verification regime for monitoring compliance is called the International Monitoring System (IMS). The radionuclide air particulate sampling station was installed at Palmer in October of 2005. Palmer's radionuclide sampler/analyzer (RASA) is a primary station in the IMS, known by its treaty code USP73 (and RN73). The pre-existing USGS seismic system is an auxiliary station, treaty code AS106.

Data collected by Palmer's RASA unit is relayed real-time via a virtual private network (VPN) across the Internet back to the CTBT Organization (CTBTO) in Vienna. As of August 2006, both the RASA and seismic systems have been certified by CTBTO. Palmer is now officially part of the IMS. The automated RASA continually filters ambient air and tests for particulates with radioisotope signatures indicative of a nuclear weapons test. The Research Associate operates and maintains the instrument.

The system operated consistently this month. The RASA GUI was checked daily. The amount of filter material was checked as needed and no anomalies were heard coming from the blower. Daily filters were processed as needed and the monthly log was sent on time. Additional details about the treaty and monitoring stations can be found on the CTBTO web site, <http://ctbto.org/>.

PHYSICAL OCEANOGRAPHY

Palmer Station has a tide and conductivity gauge located on the pier at -64.774563° -64.054837° at a height of (base datum) 12.13 meters. It was installed in 2018 as the previous location was not adequate for tide or temperature measurements.

The Research Associate acts as the station's physical oceanography observer by maintaining and observing the sea state. Observations of sea ice extent and growth stage is recorded along with continuous tidal height, ocean temperature, and ocean conductivity.

Observations of sea ice around station were made daily. The tide sensor remains off for the Palmer Pier Project. Changes were made to the on station tide prediction chart to aid in the drilling of piles and protected species observing. Mean high high water (MHHW), mean sea level (MSL), and mean low low water (MLLW) marks were added to the chart to provide context when comparing current tide levels with the Pier Project drawings. Tide level, sea water conductivity, and sea water temperature data is archived on the AMRC website: <ftp://amrc.ssec.wisc.edu/pub/palmer/tidegauge/>.

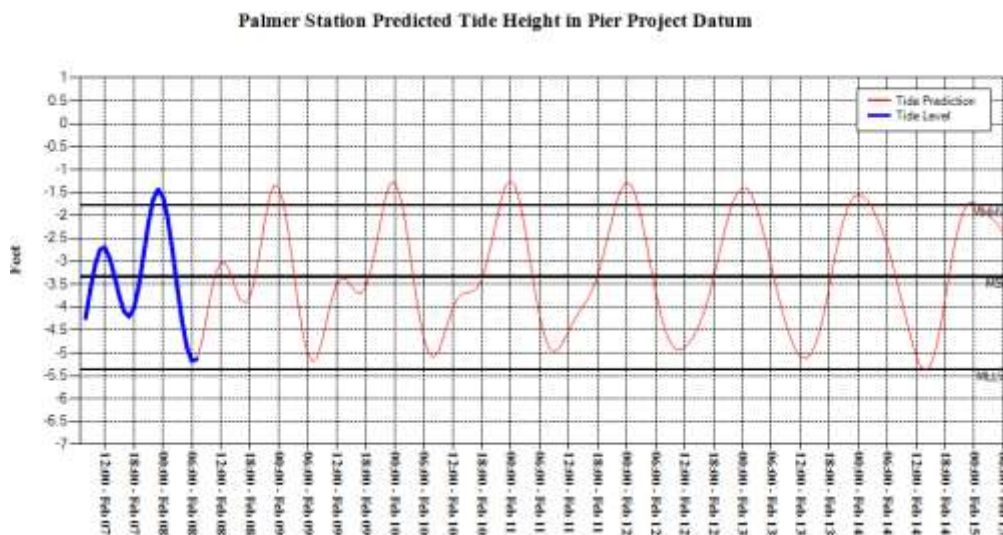


Figure 10-Tide Predictions graphed in Pier Project Datum

METEOROLOGY

Mike Carmody, Principal Investigator, United States Antarctic Program

Palmer Station is Station 89061 in the World Meteorological Organization (WMO) Worldwide Network. Automated surface synoptic observations are made 8 times each day and emailed to the

National Atmospheric and Oceanographic Administration (NOAA) for entry into the Global Telecommunication System (GTS).

The Palmer Automatic Weather Station (PAWS) is a collection of sensors, computers, and software that records the meteorological data and generates synoptic reports. PAWS began recording data in September of 2015. It was a replacement for the Palmer Meteorological Observing System (PalMOS) that was taken down in November 2017. The PAWS sensors and data acquisition hardware are located on a ridge in the backyard at -64.774130° -64.047440° at an elevation of 38.3 meters above sea level using the World Geodetic System-84. In addition to the synoptic and METAR reporting, PAWS also archives the current conditions at one-minute intervals and displays both raw data and graphs of the sensor data on our local intranet.

The Research Associate acts as Chief Weather Observer on station, measuring, compiling and distributing all meteorological data. Snow accumulation is physically observed by taking an average of five accumulation stakes found near the PAWS system. All weather data is archived locally and forwarded once per month to the University of Wisconsin on the first day of each month for archiving and further distribution.

The local weather station (PAWS) operated well throughout the month. All three remote AWS sites require maintenance so their functionality this season will be sporadic at best. The Joubins remote weather station has been online and reliable for about half the month. One minute weather data is archived on the AMRC website:

<ftp://amrc.ssec.wisc.edu/pub/palmer/observations/>.

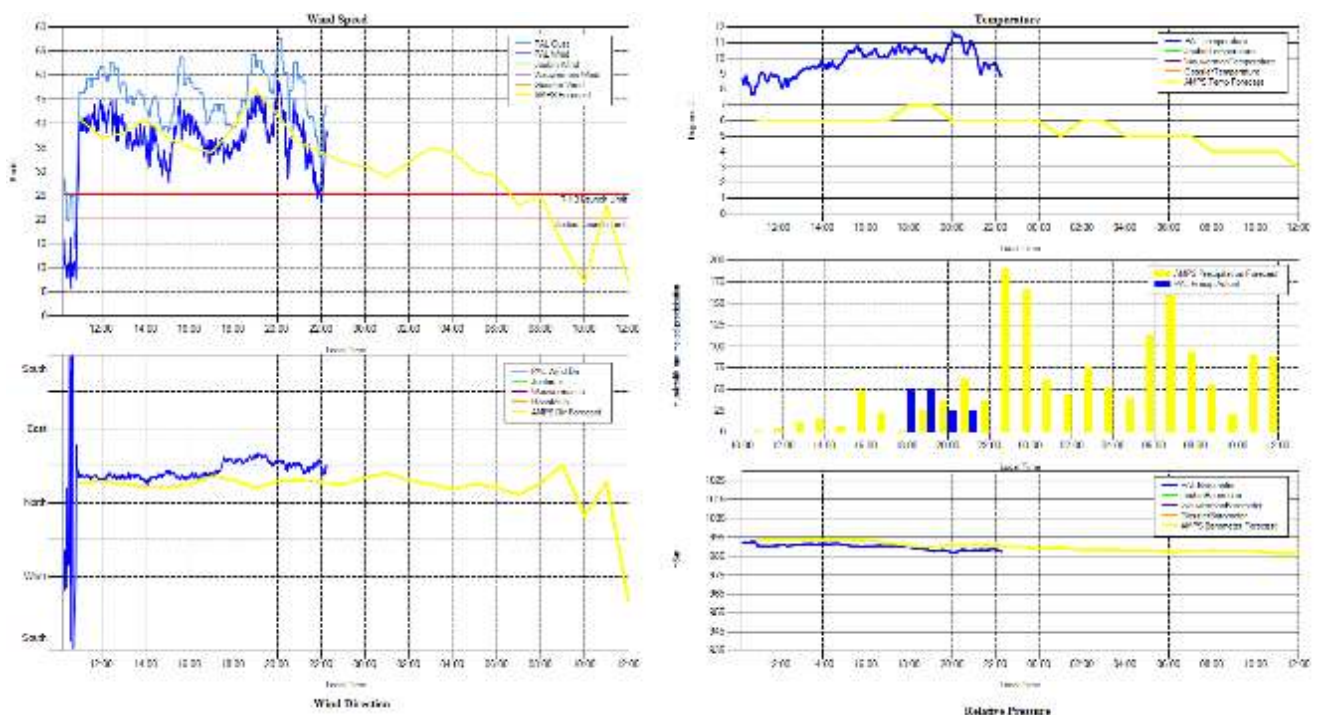


Figure 11-Weather Plots during the record high temperature (52.88°F) recorded on February 7, 2022

Monthly Weather Synopsis

The high temperature for the month was reached on February 7 when temperatures reached 52.8°F, tying the highest recorded temperature since 1989. The last time temperatures reached 52.8°F was March of 2010. February experienced 2 inches of rain over the entire month, which is slightly below the ten year average for February. The peak wind speed for the month was 58 knots on February 7.

Palmer Monthly Met summary for February 2022

Temperature
Average: 2.1 °C / 35.8 °F
Maximum: 11.6 °C / 52.88 °F on 7 Feb 23:03
Minimum: -1.9 °C / 28.58 °F on 7 Feb 04:54
Air Pressure
Average: 982.8 mb
Maximum: 1007.1 mb on 20 Feb 13:11
Minimum: 952.8 mb on 1 Feb 14:55
Wind
Average: 10.9 knots / 12.5 mph
Peak (5 Sec Gust): 58 knots / 66 mph on 7 Feb 23:05 from NE (52 deg)
Prevailing Direction for Month: WSW
Surface
Total Rainfall: 50.8 mm / 2.0 in
Total Snowfall: 0 cm / 0 in
Greatest Depth at Snow Stake: 7 cm / 2.7 in
WMO Sea Ice Observation: 1-5 Bergs, bergy bits, growlers, and brash ice