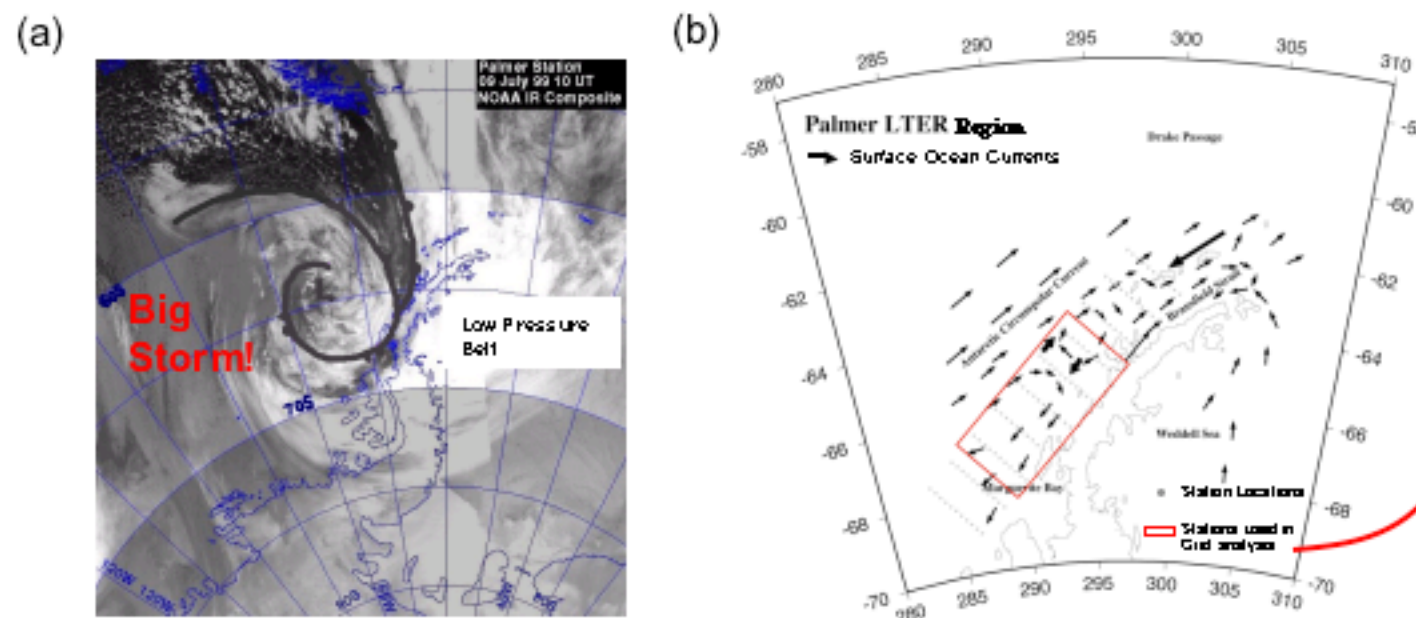




Sharon E. Stammerjohn<sup>1</sup>, Douglas G. Martinson<sup>1</sup>, Raymond C. Smith<sup>2</sup>, and Richard A. Iannuzzi<sup>1</sup>

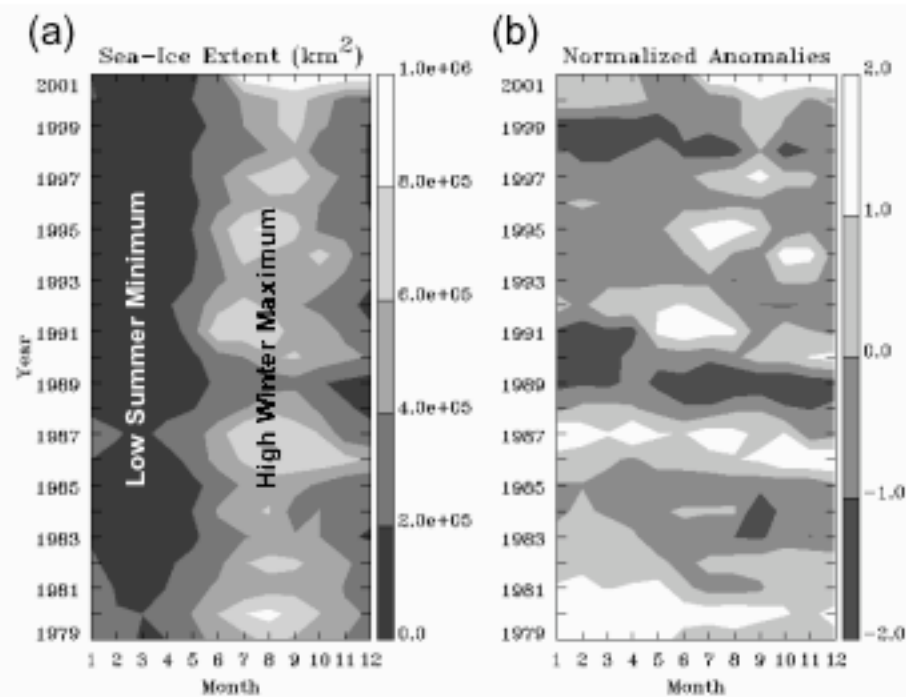
<sup>1</sup>Lamont-Doherty Earth Observatory of Columbia University, Palisades, NY 10964  
<sup>2</sup>Institute of Computational Earth System Science of University of California, Santa Barbara, CA 93106

## 1. Geographic Setting of the PAL LTER



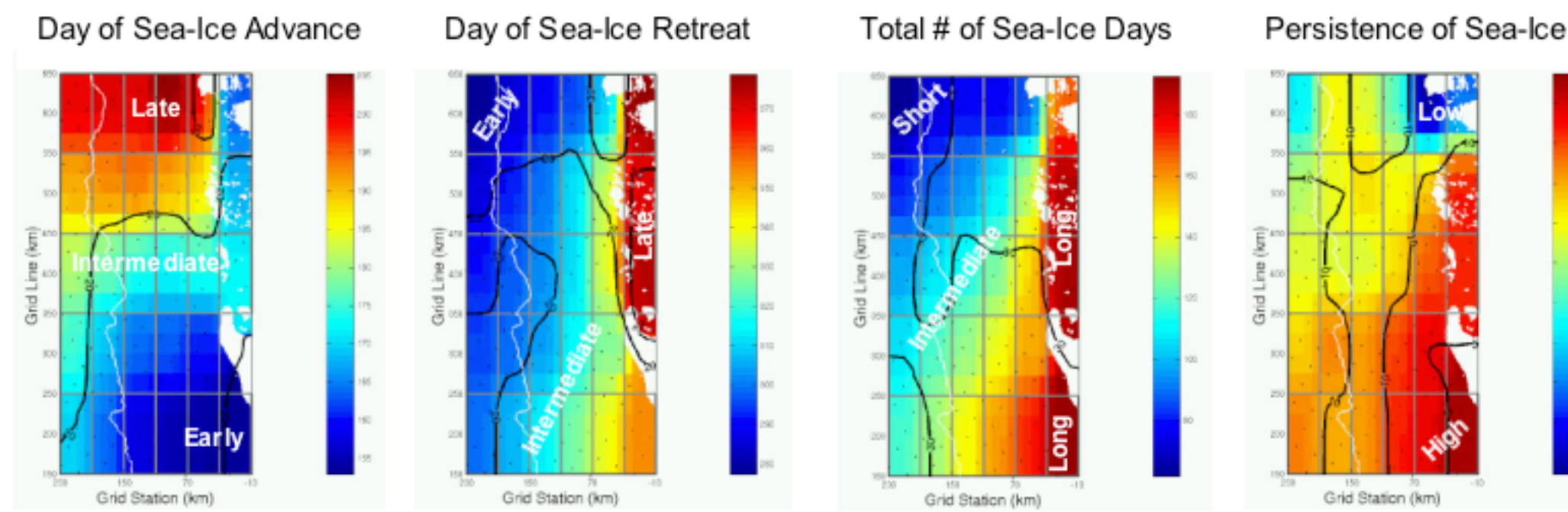
- Direct exposure to prevailing westerlies and storm forcing (Fig 1a)
- Relatively close to the frontal boundaries of the Antarctic Circumpolar Current and the corresponding Circumpolar Deep Water (Fig 1b)
- The confluence of subtropical and polar air masses and water types creates an ocean-atmosphere-ice (OAI) system that is sensitive to climate variability

## 2. Central Tenet of the PAL LTER



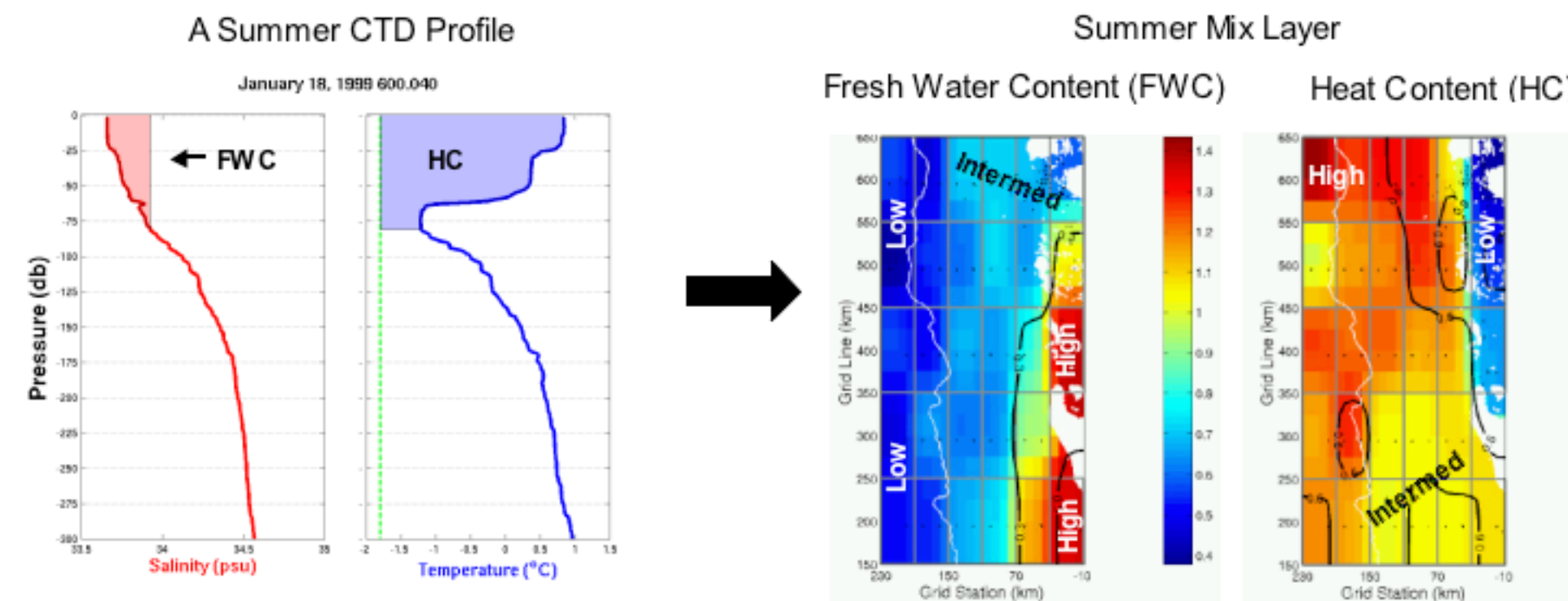
- Seasonal and interannual variability of sea ice affects (Fig 2) all trophic levels: from the timing and magnitude of seasonal primary production to the breeding success and survival of apex predators (Smith et al., 1995; Ross et al., 1996)
- In contrast to terrestrial ecosystems, external physical forcing plays a more dominant role in causing variability in marine ecosystems than internal biological mechanisms (Steele, 1991)
- Variable external forcing includes high variability in the timing of sea-ice advance and retreat from year-to-year (Fig 2a), and the changing persistence of monthly anomalies (from >1yr to <1yr) between the 1980s and 1990s (Fig 2b)

## 3. Sea-Ice Seasonal Climatologies



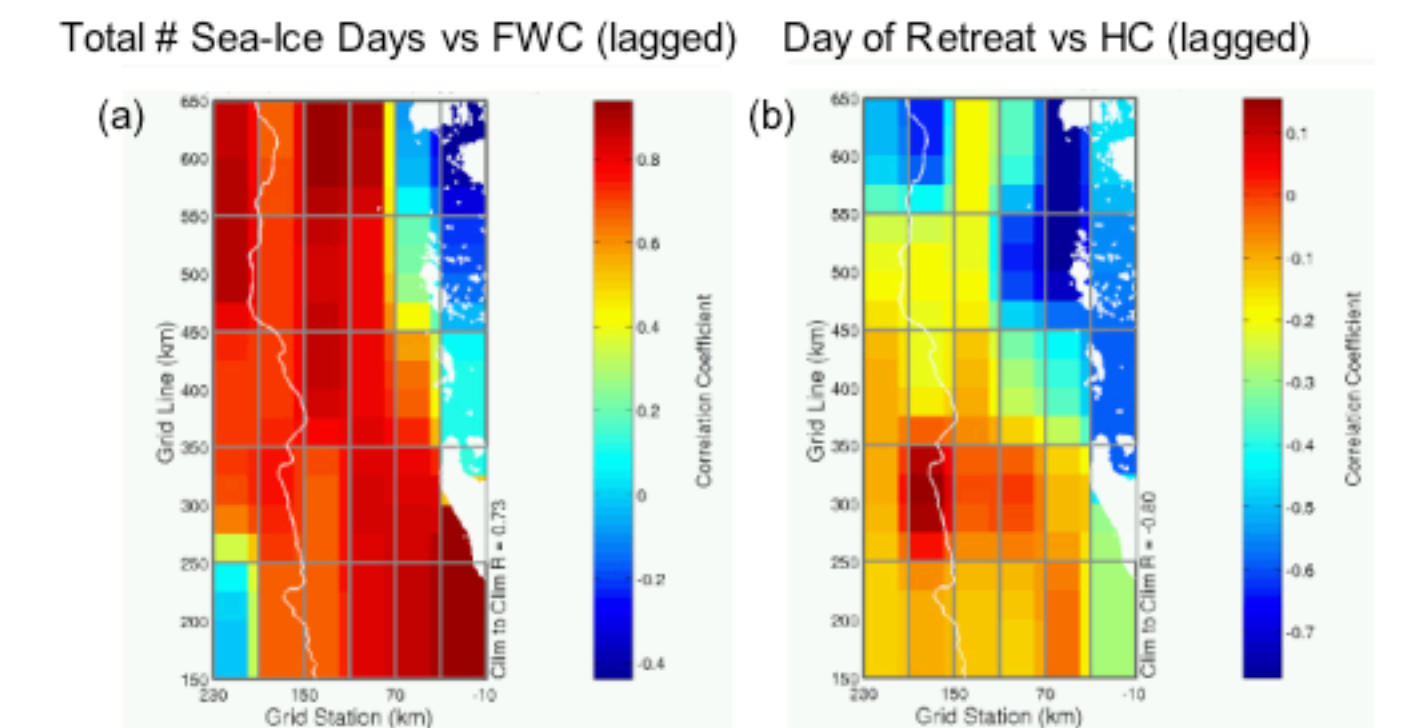
- Sea-ice indices were determined from daily SSM/I (1992 to 2001) satellite derived sea-ice concentrations (Comiso, 2003); land is white, and contours of standard deviation and 1500 m slope-shelf break are black and white, respectively
- Offshore North: short ice cover duration (late advance, early retreat), openings occur ~15% of time
- Offshore South: intermediate ice cover duration (early advance, intermediate retreat), openings occur ~10% of time
- Onshore North: long ice cover duration (intermediate advance, very late retreat), openings occur ~15-20% of time
- Onshore South: very long ice cover duration (early advance, late retreat), openings occur ~5% of time

## 4. Upper Ocean Summer Climatologies



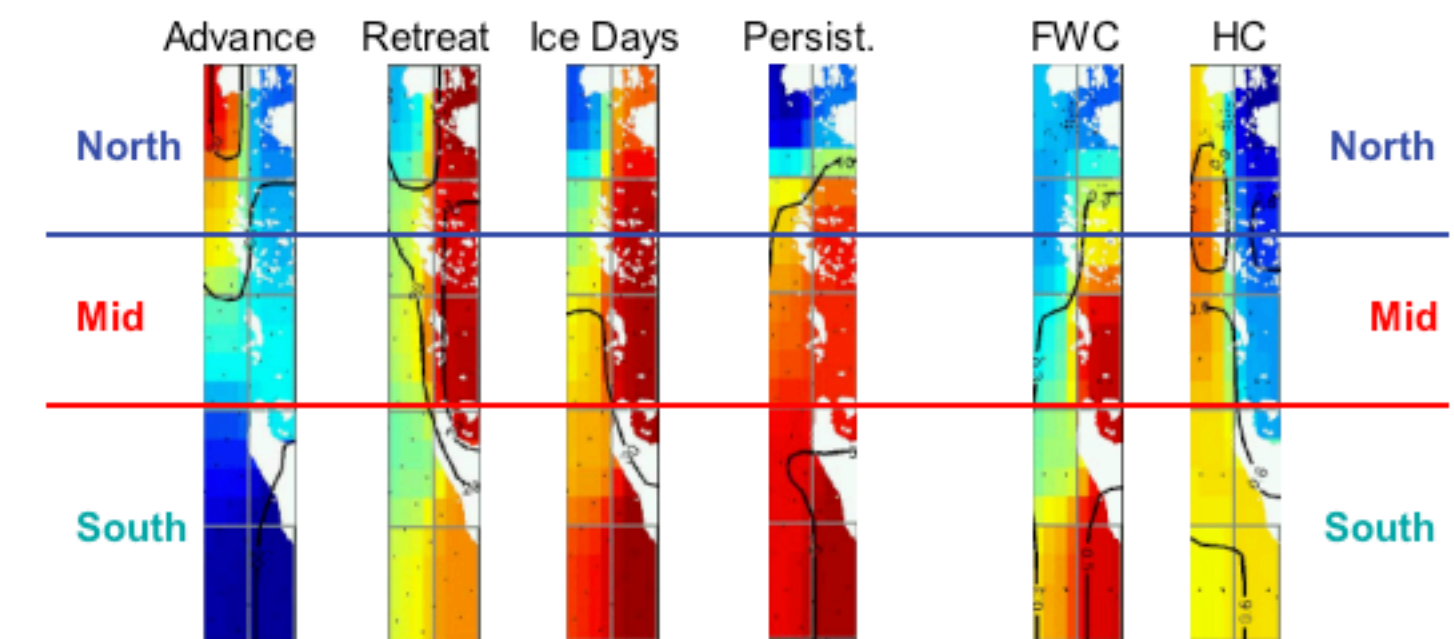
- Fresh water content (FWC) and heat content (HC) are derived from summer CTD profiles (1993-2001) by vertically integrating salinity and temperature, respectively, over the summer surface mix layer (Martinson and Iannuzzi, 1998); FWC and HC are essentially removed by the growth of sea-ice in the coming winter and have been normalized into equivalent units of effective sea-ice thickness
- Offshore North: low FWC and high HC (salty, warm, and very deep surface layer)
- Offshore South: low FWC and intermediate HC (salty, warm, and deep surface layer)
- Onshore North: low to intermediate FWC and low HC (very fresh, cold, and very shallow surface layer)
- Onshore South: high FWC and intermediate HC (very fresh, cold, and moderately deep surface layer)

## 5. Sea-Ice and Upper Ocean Co-Variability



- Total # of sea-ice days during the previous winter is positively correlated in time against summer surface fresh water content (Fig 5a) for most of the grid except
  - the mid and north coastal regions (where glacier meltwater input dominates the fresh water budget)
  - the south shelf break region (where intrusion of salty circumpolar deep water also contributes to the fresh water budget)
- Day of sea-ice retreat during the previous winter is negatively correlated in time against summer surface heat content (Fig 5b), particularly for the coastal regions
  - and for the rest of the grid, noting that in general sea-ice extent and surface air temperature (SAT) are negatively correlated (Smith et al, 1996)
  - but when this is not the case (as for the late 1990s), then SAT is the dominate influence on HC

## 6. Three Distinct Coastal Regions



- The North, Mid, and South coastal regions are distinct in their geography and ice-ocean coupling:
  - North: location of Palmer Deep; typically low sea-ice concentration and frequent opening/closing of the ice cover create variable upper ocean light environment; glacier meltwater run-off dominates freshwater budget
  - Mid: dotted by numerous archipelagos that trap both sea-ice and freshwater ice; typically high ice concentration and long ice covered period; glacier meltwater run-off is low relative to freshwater input from ice melting in situ
  - South: mouth of Marguerite Bay; typically high sea-ice concentration and long ice covered period; freshwater input is dominated by large volumes of sea-ice melting in situ

## 7. Summary

- External physical forcing of the Antarctic marine ecosystem in the PAL LTER study area includes high temporal and spatial variability of sea-ice (Figs 2 and 3) and its affect on ocean-ice co-variability
- Climatologies of seasonal sea-ice indices and summer upper ocean parameters show that spatially there are distinctly different physical environments within the PAL LTER study area (Figs 3 and 4)
- The freshwater content of the summer mix layer is highly correlated (temporally) with the previous winter's sea-ice duration throughout most of the PAL LTER study area, inferring that the freshwater contribution from sea-ice melting in situ is the dominant influence on the freshwater budget (Fig 5)
- The exceptions are the coastal regions which show distinctly different ice-ocean coupling and therefore distinctly different physical forcing of the marine ecosystem (Fig 6)

## 8. References

- Comiso, J., Sea ice concentrations derived from the Bootstrap algorithm, in DMSP SSM/I daily polar gridded sea ice concentrations, edited by J. Maslanik and J. Stroeve, National Snow and Ice Data Center, Boulder, CO, Digital Media, 2003.
- Martinson, D. G., and R. A. Iannuzzi, Antarctic ocean-ice interaction: implications from ocean bulk property distributions in the Weddell gyre, in Antarctic Sea Ice: Physical Processes, Interactions and Variability, edited by M. O. Jeffries, pp. 243-271, American Geophysical Union, Washington, DC, 1998.
- Ross, R. M., E. E. Hofmann, and L. B. Quetin, Foundations for Ecological Research West of the Antarctic Peninsula, American Geophysical Union, Washington, DC, 1996.
- Smith, R. C., K. S. Baker, W. R. Fraser, E. E. Hofmann, D. M. Kaf, J. M. Klinck, L. B. Quetin, B. B. Prezelin, R. M. Ross, W. Z. Trivelpiece, and M. Vernet, The Palmer LTER: A long-term ecological research program at Palmer Station, Antarctica, Oceanography, 8 (3), 77-86, 1995.
- Smith, R. C., S. E. Stammerjohn, and K. S. Baker, Surface air temperature variations in the western Antarctic peninsula region, in Foundations for Ecological Research West of the Antarctic Peninsula, edited by R. M. Ross, E. E. Hofmann, and L. B. Quetin, pp. 105-121, Antarctic Research Series 70, American Geophysical Union, Washington, DC, 1996.
- Stammerjohn, S. E., and R. C. Smith, Spatial and temporal variability of western Antarctic Peninsula sea ice coverage, in Foundations for Ecological Research West of the Antarctic Peninsula, edited by R. M. Ross, E. E. Hofmann, and L. B. Quetin, pp. 81-104, Antarctic Research Series, American Geophysical Union, Washington (DC), 1996.
- Steele, J. H., Can ecological theory cross the land-sea boundary, Journal of Theoretical Biology, 153, 425-436, 1991.