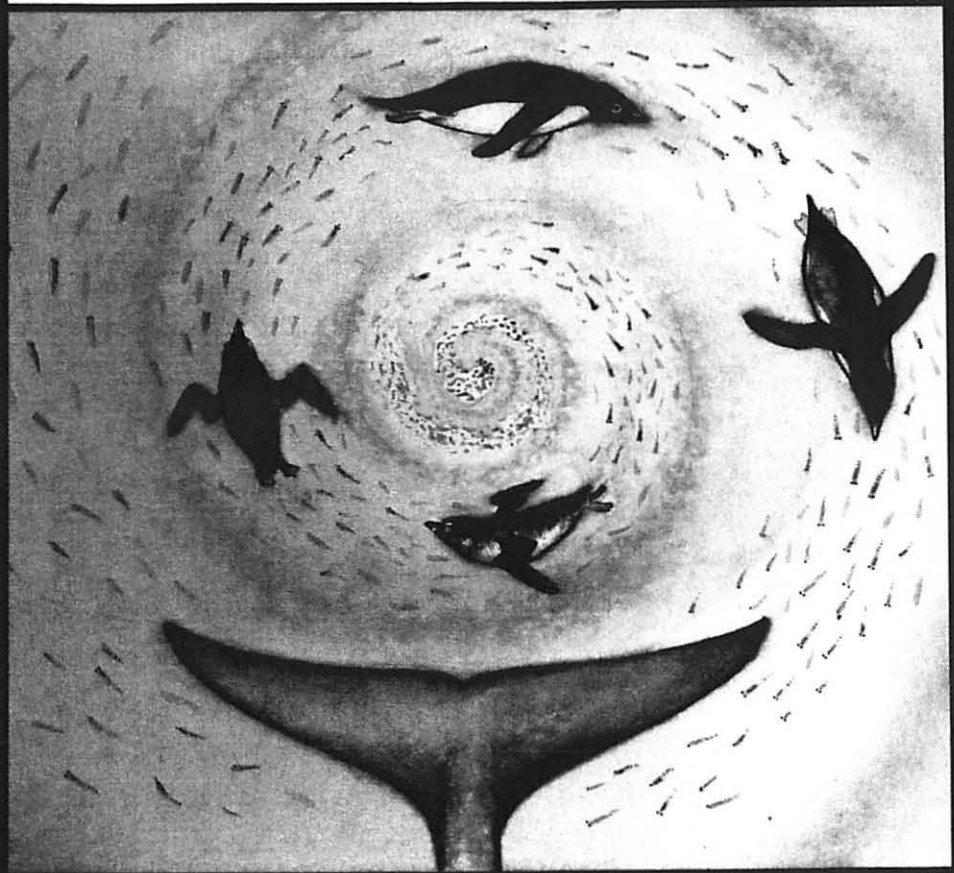


# Sea Secrets



# FIELD JOURNAL

Journal Design & Illustrations by Kristen Carlson [www.kristencarlson.net](http://www.kristencarlson.net)

CUT ALONG DOTTED LINE

For educational use only

**Get Artistic!** Draw your favorite Sea Secrets animal on this postcard and you may see your artwork published on the internet. Please include your age, city and state (no name).

EXTRA  
POSTAGE  
REQUIRED

## Sea Secrets

c/o Ocean Ingenuity  
PO Box 55  
Hartwood, VA  
22471

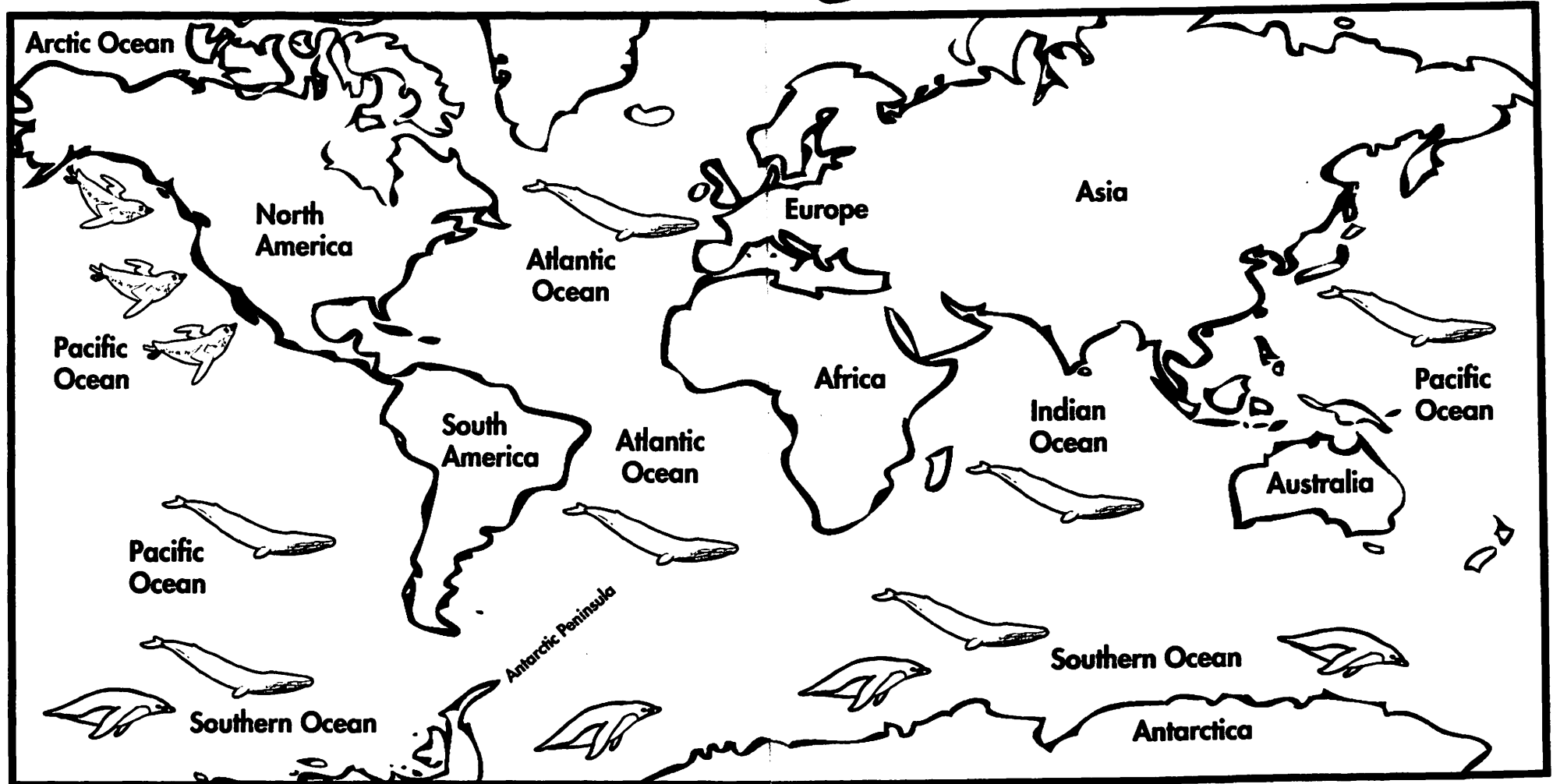
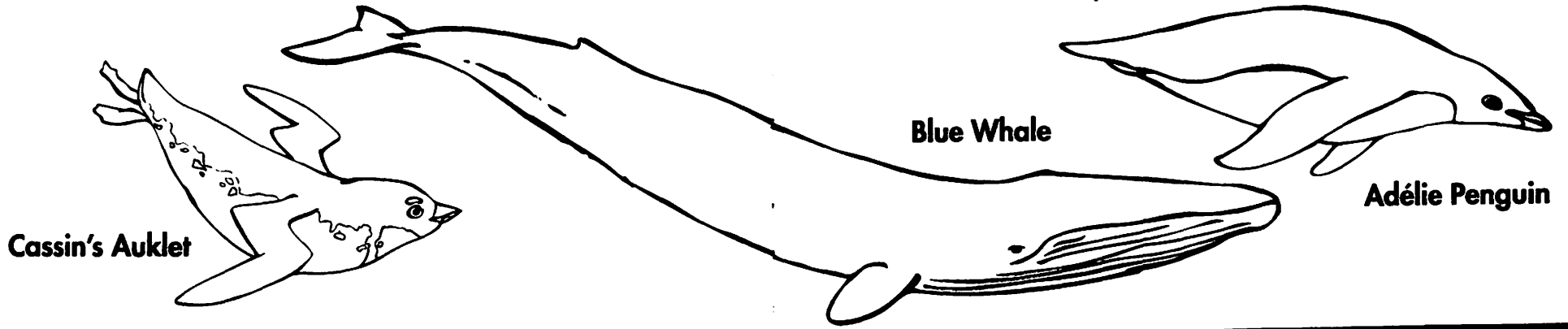


**J**ourney thousands of miles across the Pacific Ocean and investigate a mystery connecting three distinctly different animals from the California Current down to the polar waters west of the Antarctic Peninsula. Become an ocean detective and discover the connection between a seabird, a whale, and a penguin; and maybe you'll uncover the sea secret that links them all.

THIS JOURNAL BELONGS TO:

# Where in the World?

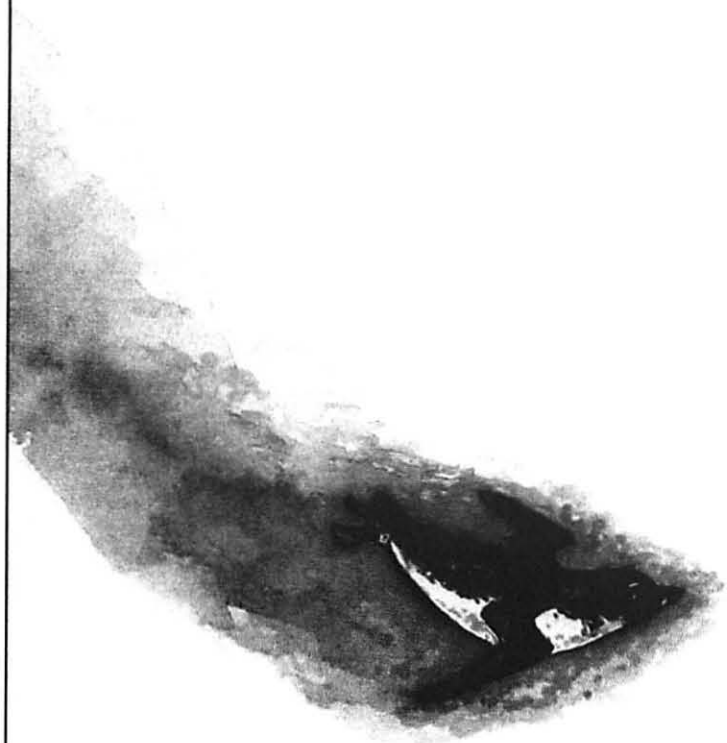
Which of the five oceans have these marine creatures? Find them on the map and then color the page.



Field Notes

# Cassin's Auklet

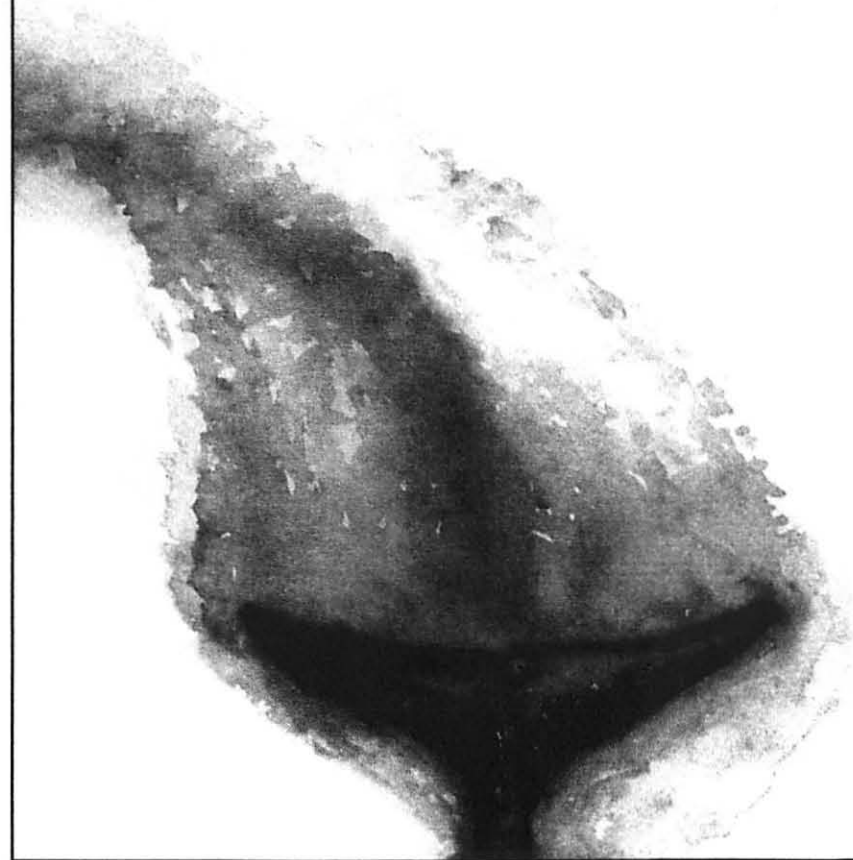
Write down what you: See  Touch  Hear 



Field Notes

# Blue Whale

Write down what you: See  Touch  Hear 



Field Notes




# Adélie Penguin

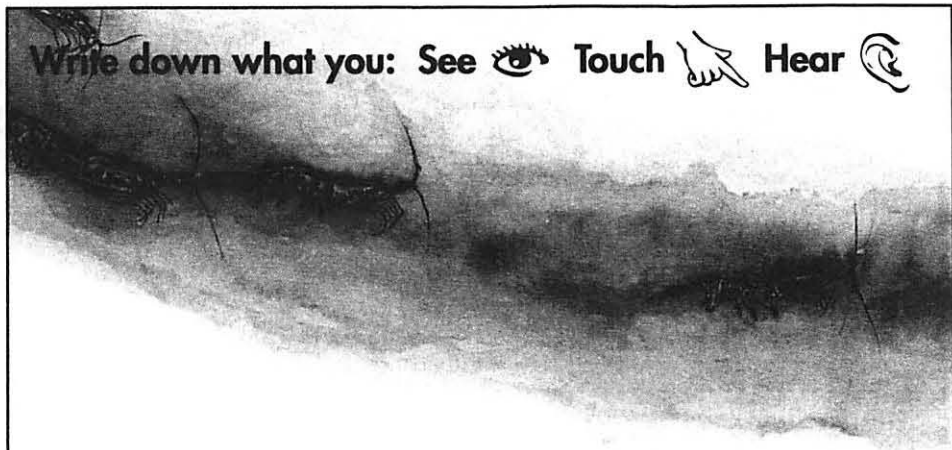
Write down what you: See  Touch  Hear 



Field Notes

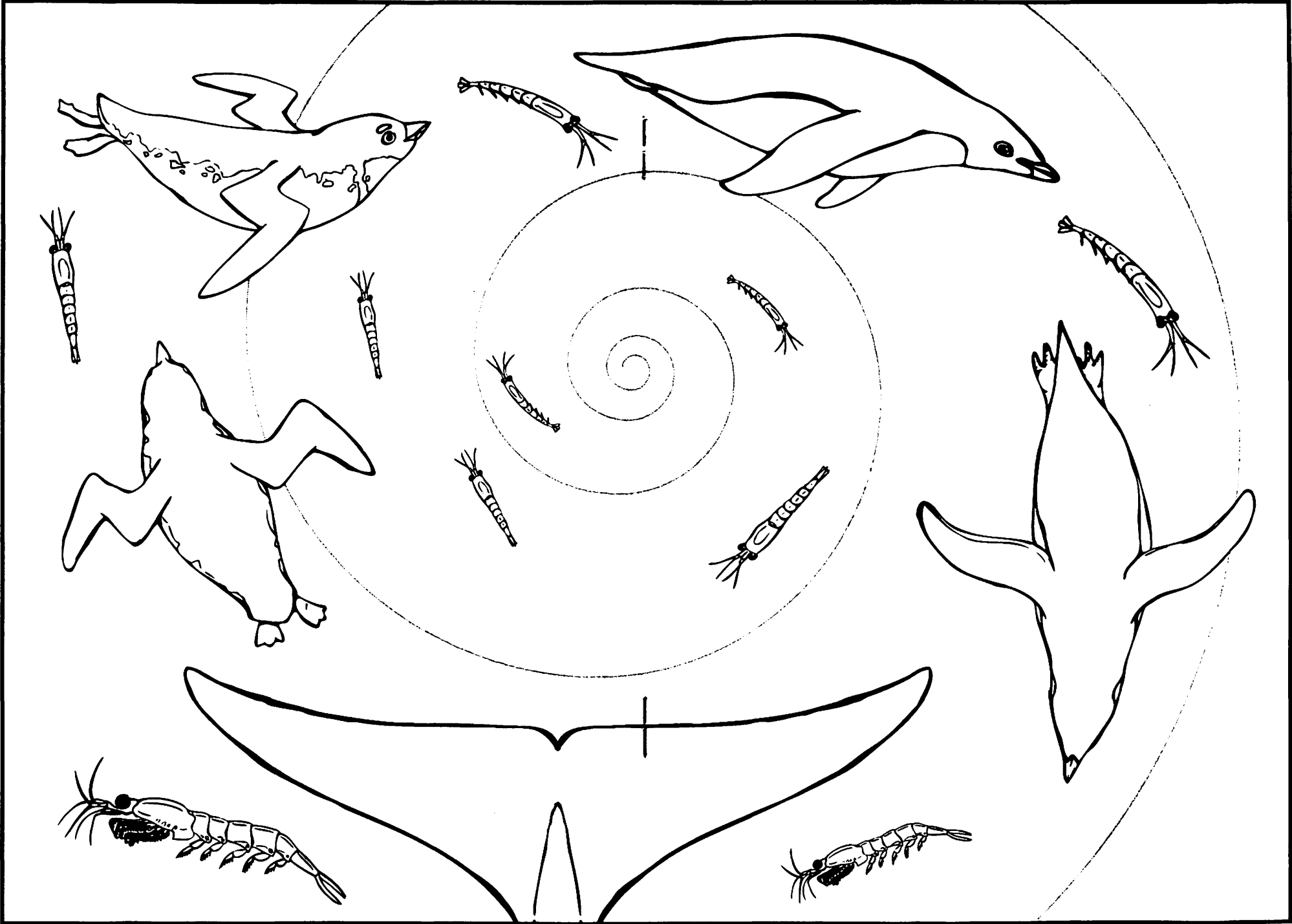
# Krill

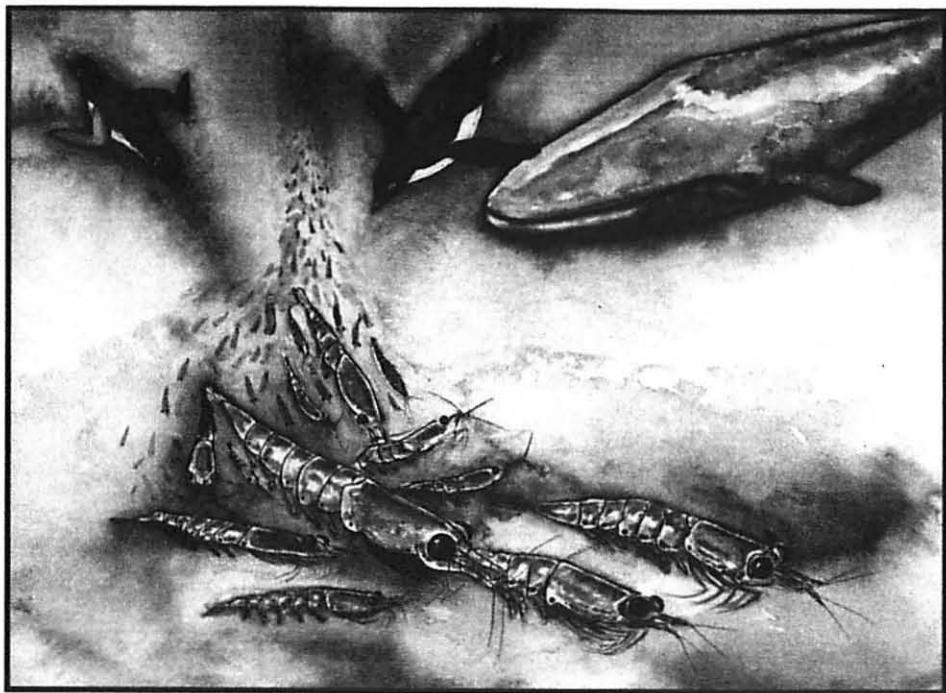
Write down what you: See  Touch  Hear 



# Krill Connections

Color the krill and the marine animals that depend on them for food.





## Art Notes

# Draw the Animals

**All you need is this journal and . . .**  
 Markers, pencils or crayons  
 in the following colors:

black, gray,  
 orange, red, pink  
 light blue

## Draw a Krill

1. Draw the body.



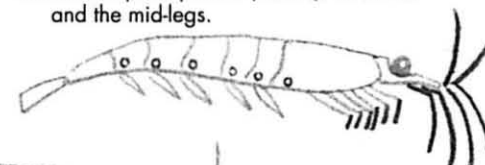
2. Add the tail, swimming legs, and head.



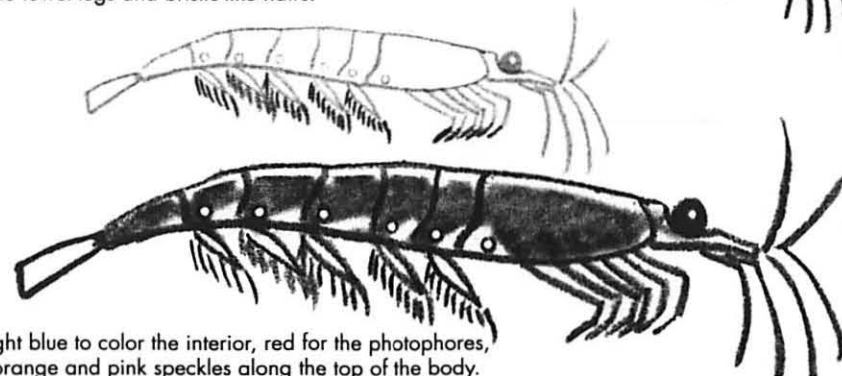
3. Add the segments, and six upper-legs.



4. Add the photophores (circles), antenna, and the mid-legs.



5. Add the lower-legs and bristle-like hairs.



5. Use light blue to color the interior, red for the photophores, add orange and pink speckles along the top of the body.

## Draw a Blue Whale

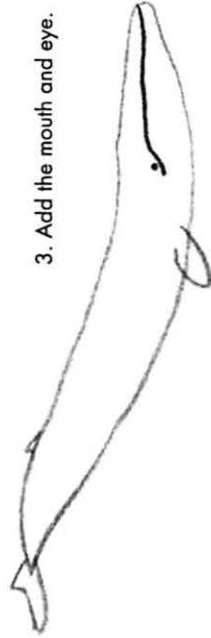
1. Draw the body.



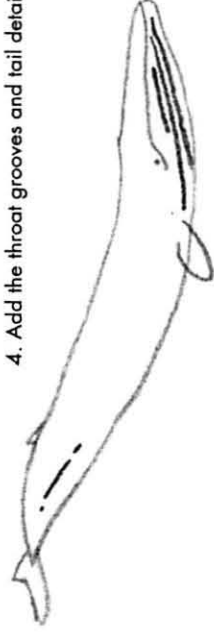
2. Add the fins and fluke.



3. Add the mouth and eye.



4. Add the throat grooves and tail detail.



5. Color the whale gray, using a little light blue to mottle the skin.



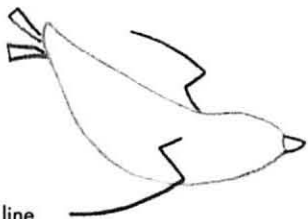


## Draw a Cassin's Auklet

1. Draw the body.



2. Add the feet, one side of the wings, and the bill.



3. Add the second side to the wings, eyeball and spot above eye.



4. Add the mouth, eye, and a line showing where the gray-white belly and black back feathers meet.



5. Color the seabird's bill, feet and eye light blue and it's body black. Leave the spot above the eye, lower part of the belly and tail white.



## Draw an Adélie Penguin

1. Draw the body.



2. Add foot, one wing tip, eyeball and bill.



3. Add a line that shows where the black and white feathers meet.



4. Add eye and mouth.



5. Color the penguin's bill and feet orange and it's body black. Leave the belly and one wing white.

